



Paris, France
29 June – 2 July 2025

ESHRE 41st Annual Meeting



Welcome to Paris





Congress website

Information is available on:
<https://www.eshre.eu/ESHRE2025>

ESHRE 2025



Venue



Paris Expo Porte de Versailles
1 Place de la Porte de Versailles
75015 Paris
France

Accommodation

For hotel reservations, please contact our official housing agency:

bnetwork accommodation team

E-mail: eshre@bnetwork.com

Phone: +33 1 58 16 20 10

[Official housing site and booking form >](#)

View the preliminary main programme

Find out what is planned so far.

[Click here >](#)





The venue

ESHRE 2025 will be held at:

Paris Expo Porte de Versailles

<https://www.viparis.com/en/our-venues/paris-expo-porte-de-versailles-en>

Congress Halls

The congress will take place in Pavillion 7 (7.2 and 7.3)

Virtual tour

<https://www.viparis.com/en/our-venues/paris-expo-porte-de-versailles-en/spaces>





ESHRE Partners

ESHRE's official housing agent:

bnetwork

Email: eshre@bnetwork.com

Phone: +33 1 58 16 20 10

Official housing site & booking form on
<https://eshre.bnetwork.com/Home.aspx>

Events during the congress:

bnetwork

Email: souleimane.wahib@bnetwork.com

Phone: +33 497 060 326

or +33 4 89 37 44 93

www.bnetwork.com





Exhibit at ESHRE 2025





Booth types

The following booth types will be offered:

FLOOR SPACE ONLY (up to max. 351m²)

- A booth space without a shell scheme
- Exhibitor's responsibility to take care of the design, set-up, installation, cleaning and dismantling of the booth
- Please note that your booth space should be separated from your neighbouring exhibitors by means of a wall
- Furniture, graphics, extra electricity, daily cleaning etc. are at an additional cost and can be rented through ESHRE's preferred supplier (Webshop available in 2025)

FLOOR SPACE + SHELL SCHEME (up to max. 27m²)

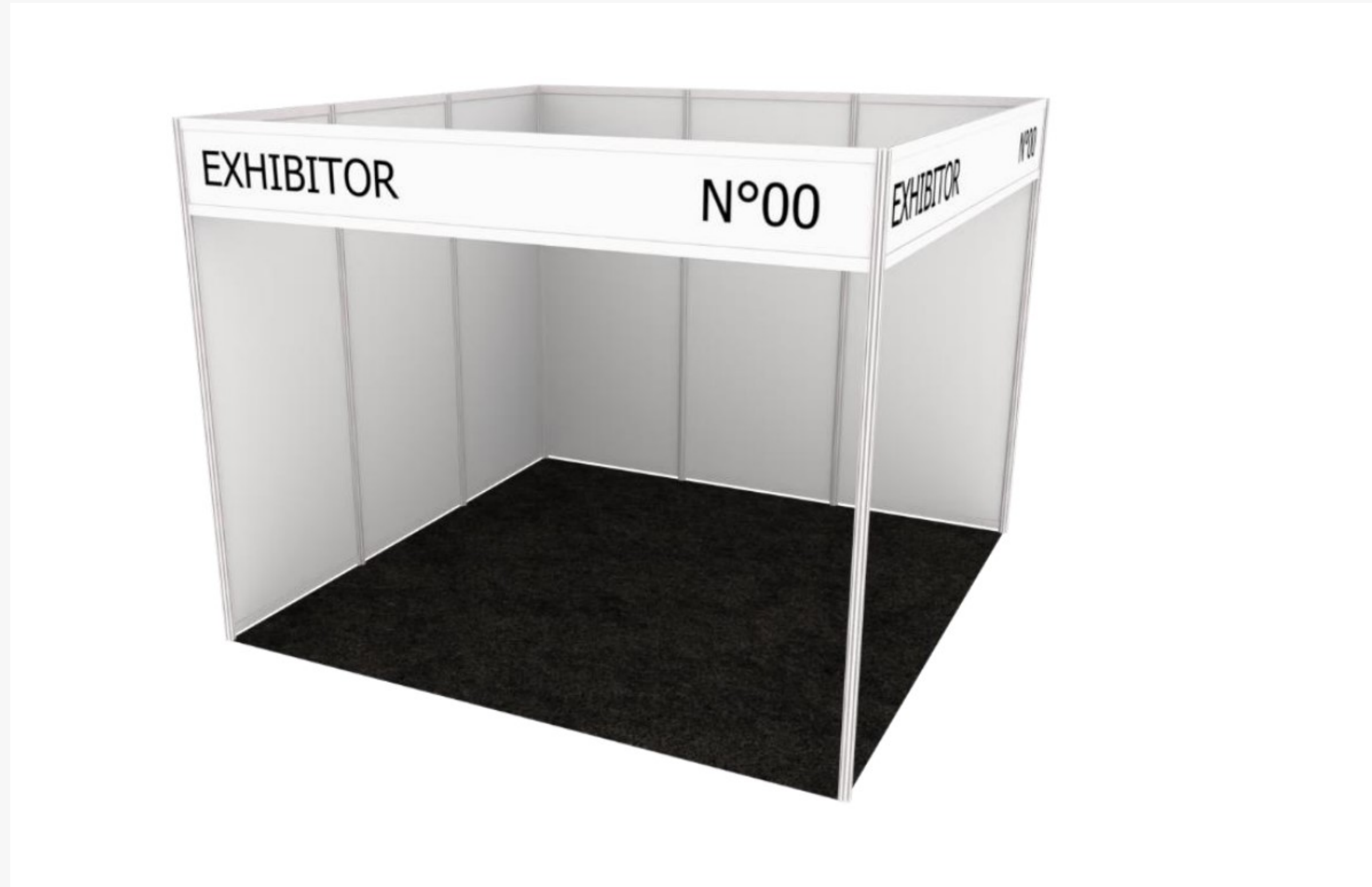
- A booth space including a shell scheme
- It is set up for exhibitors who do not design and construct their own stand
- It is set up and dismantled by the congress venue

The SHELL SCHEME includes:

- White wall panels L100 x H250 cm
- Carpet flooring (6 colours to choose from)
- Facia board with company name on each open side
- 1 LED spot for 3m²
- Daytime power 1 kW (instead of 3kW)
- Build-up and dismantling
- Initial cleaning before the official opening of the exhibit + emptying bins daily (no daily floor cleaning included)



Visual shell scheme





Booth fees per 1m² / per 1 sq.ft.

Booth type	Floor space only € per 1 m ² / \$ per 1 sq. ft. excl. VAT	Floor space only € per 1 m ² / \$ per 1 sq. ft. excl. VAT
Inline booth (i.e. 1 side open towards aisle)	€420 / \$42	€520 / \$52
Corner booth (i.e. 2 sides open towards aisle)	€441 / \$44	€546 / \$55
Peninsula booth (i.e. 3 sides open towards aisle)	€462 / \$47	572€ / \$58
Island booth (i.e. 4 sides open towards aisle)	483€ / \$49	/

Furniture, graphics, electricity, etc. are at an additional cost and can be rented separately with ESHRE's preferred supplier (Webshop available in the course of February 2025).

The fees listed in dollars are approximate and may vary based on currency conversion rates.





Cost simulation booth fees

Minimum size = 9m² / 96,87 sq.ft.

Booth type	Floor space only 9m ² (€)= 96,87 sq. ft.(\$) excl. VAT	Floor space + shell scheme 9m ² (€)= 96,87 sq. ft.(\$) excl. VAT
Inline booth (i.e. 1 side open towards aisle)	€3780 / \$4068	€4680 / \$5037
Corner booth (i.e. 2 sides open towards aisle)	€3969 / \$4262	€4914 / \$5328
Peninsula booth (i.e. 3 sides open towards aisle)	€4158 / \$4552	€5148 / \$5618
Island booth (i.e. 4 sides open towards aisle)	€4347 / \$4746	/

The fees listed in dollars are approximate and may vary based on currency conversion rates.



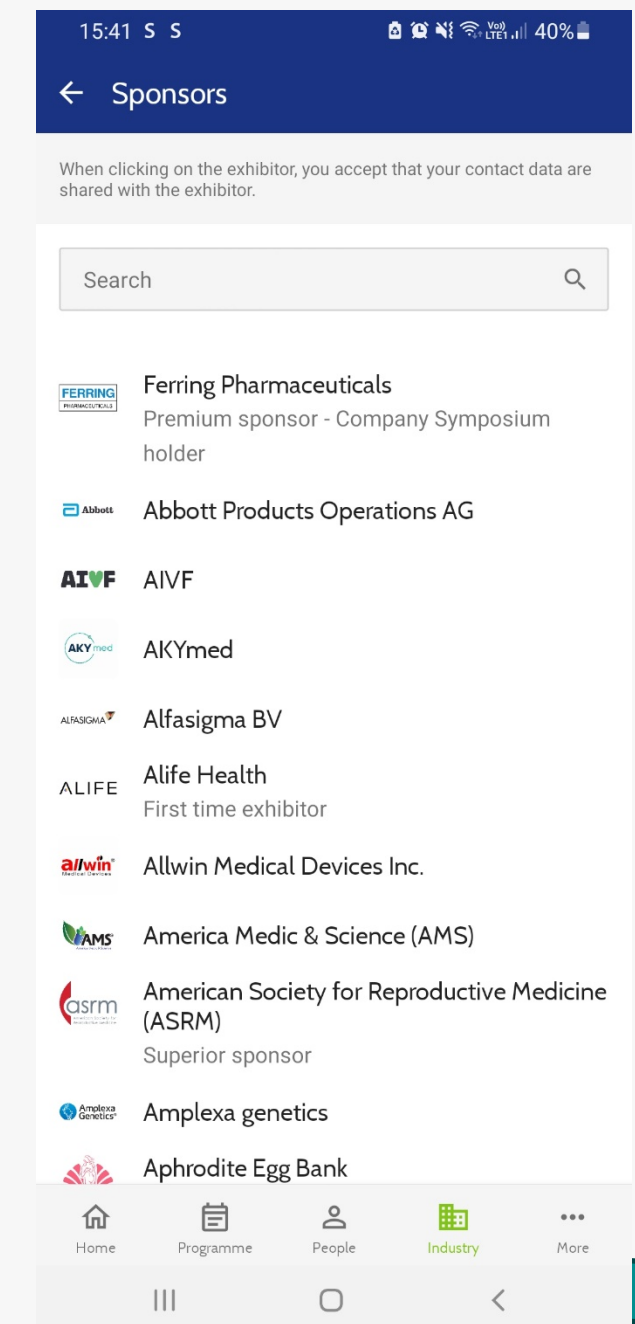
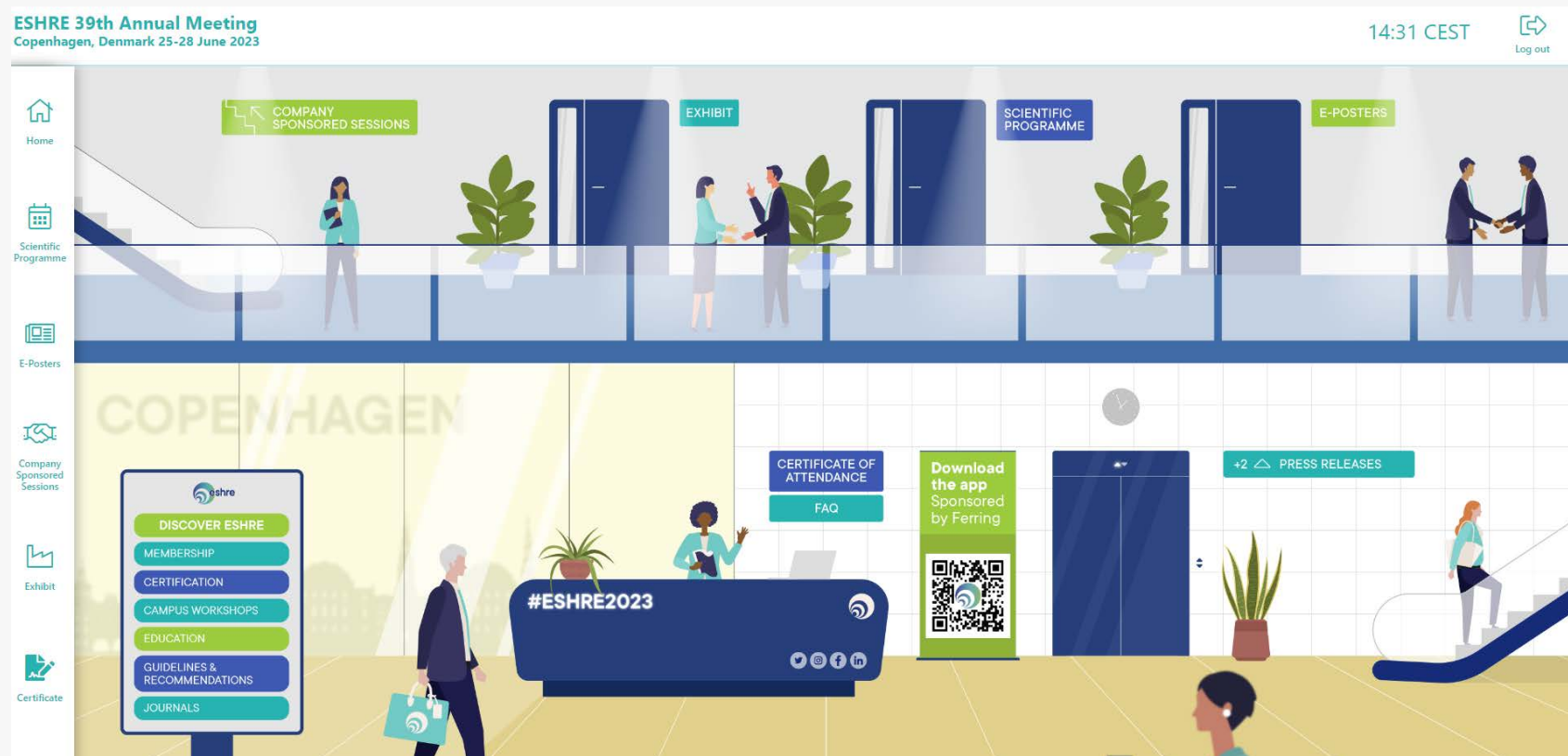


Virtual Exhibitor Page

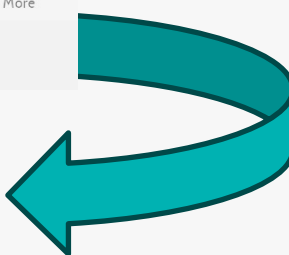
A virtual exhibitor page is included in the space rental based on square metres that you book:

- Basic package for floor spaces from 9m² to 99m²
- Superior package for floor spaces from 100m² to 252m²
- Premium package for floor spaces from 253m² to 351m²

The virtual exhibitor page will be available on the desktop platform and in the congress app of the Annual Meeting



The Congress APP





How to book a booth space

ONLINE BOOKING FORM

- You can book your booth space through <https://www.eshre.eu/ESHRE2025/Exhibit-and-Sponsors/Exhibition-order-form>

IMPORTANT:

- You need to log in to get access to the form
- In case you don't have an account yet, then please create your personal account via the following link: <https://www.eshre.eu/ESHRE/CreateAccount#createaccount>
- In case you already have an account and don't know your password anymore, then you can renew your password on <https://www.eshre.eu/ESHRE/forgot-password.aspx#forgotpassword>

Should you encounter any login difficulties, feel free to reach out to us at exhibit@eshre.eu





Exhibitor benefits

Exhibit – what's included?

- Exposure at all exhibit hall events:
 - Welcome Reception in the exhibit hall with drinks and fingerfood on Sunday evening 29 June from 20:00 to 22:00 (official opening of the exhibit)
 - The exhibit will be open to visitors for 3 days, with 3 lunch breaks and 5 coffee breaks scheduled
- Exclusive hours during the Welcome Reception, lunch and coffee breaks, with no competing scientific sessions
- Complimentary lunch and coffee for all exhibitors and delegates in the exhibit hall
- Stand holders are entitled to a number of free badges depending on the booth size (see next slides)
- 4 days for build-up and 1,5 days for dismantling



Exhibit



Building restrictions booths

- Minimum exhibit space = 9 m² - Maximum exhibit space = 351 m² (i.e. total of 39 units of 9 m²)
- You are allowed to book a maximum of two distinct booth spaces. In that case the second booth must be placed opposite to your first one
- Bookable aisles can also be reserved (aisles between 3m and 4m, 5m and 6m). So, you can use the bookable aisles as a space to construct your stand. However, the emergency aisles must remain free of stands
- Maximum building height
 - Island booths: 4 metres (middle and side walls)
 - Inline, Corner and Peninsula booths: 2,5 metres (back, middle and side walls)
- There are 2 distinct overall heights: **4m (orange booth spaces)** and **6m (green booth spaces)**
- Hanging banners: The lowest point of the hanging banner has to be positioned at 4.5 meters above the floor
The hanging banners can have a maximum measurement of 1.5m, which brings the overall possible maximum height up 6 metres
- Walls and middle structures: In order to create an open exhibition environment, only 1/3 of each stand's side facing an aisle can be covered by a wall or a middle structure



Exhibit

Building restrictions booths

- Rigging points can only hold 80 kg per point, instead of the “normal” 150 kg
- There are weight limitations for the exhibition floor: the maximum floor load is 600 kg/m² (see page 42 in the technical regulations)

All custom-made booth plans will need to be reviewed and approved by ESHRE.
Booth plans should be sent to exhibit@eshre.eu before 30 April 2025.



Badges Stand holders

Stand holders are entitled to a number of free Exhibitor badges and Full programme badges, depending on the size of the exhibit space.

Summary table outlining free exhibitor and full programme badges

Booth size	Free Exhibitor badges	Free Full programme badges
9 m ²	2	1
10-18 m ²	4	1
19 – 44 m ²	8	1
45 – 71 m ²	16	2
72 – 90 m ²	26	2
91 – 152 m ²	35	3
153 – 252 m ²	45	4
253 – 351 m ²	60	4



Badges Stand holders

Free & payable Exhibitor badges

FREE Exhibitor Badges

- Give in-person and virtual access to the exhibition and to the sponsored sessions held in real-time for the duration of the sessions
- Give on-demand access to the virtual exhibit and sponsored sessions (for 5 months after the meeting has been held)
- These badges do not include access to the official scientific programme (i.e. precongress courses and main programme)

PAYABLE Exhibitor Badges

- If you would like to order additional exhibitor badges on top of the free badges, then the price is 139 Euro excl. VAT per exhibitor badge
- Visitors Exhibit who don't get a discount badge from a stand holder have to book a Visitor Exhibit badge which costs 320 Euro excl. VAT





Badges Stand holders

Free & payable Full programme badges

FREE Full programme Badges

- Give in-person and virtual access to the scientific programme (excl. precongress courses), sponsored sessions and exhibition held in real-time for the duration of the congress
- Give on-demand access to the virtual meeting platform for 5 months after the meeting has taken place

PAYABLE Full programme Badges

- If you would like to order additional Full programme badges on top of your free full programme badge(s), then you can order these through an exhibit registration link which will be made available
- If you order the full programme badges through the exhibit registration link, then the participant will also have access to the exhibit before and after the exhibit's opening hours
- Until 6 May 2025: the fee for extra full programme badges is 522,75 Euro per badge (incl. French VAT of 20%) .
As of 7 May 2025: the fee will increase to 645,75 Euro per badge (incl. French VAT of 20%).
As of 4 June 2025: the fee will increase to 768,75 Euro per badge (incl. French VAT of 20%)

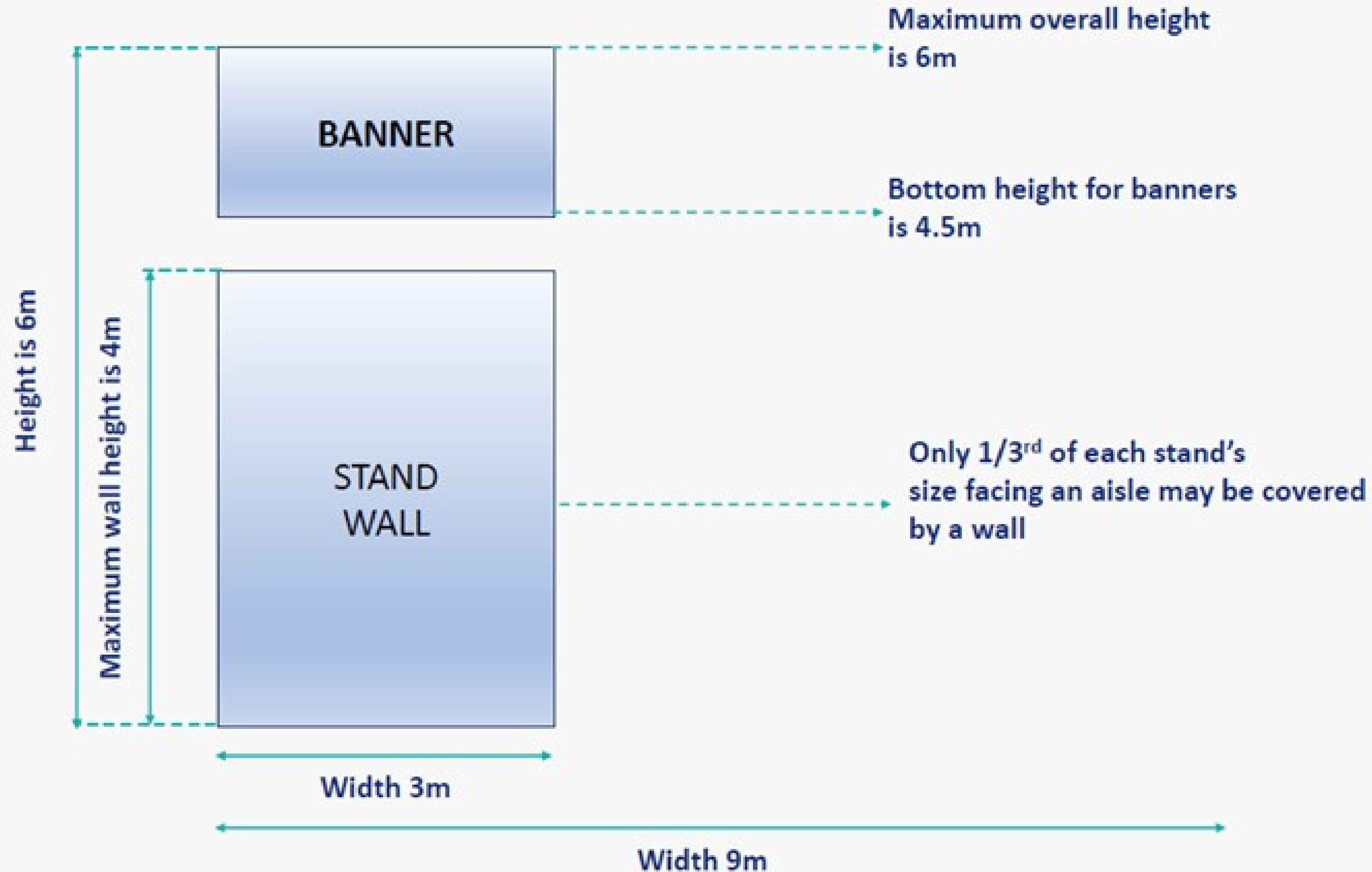
Stand holders will receive a link from ESHRE to order their free (and payable) exhibitor badges at a later stage.





Building Restrictions Green spaces

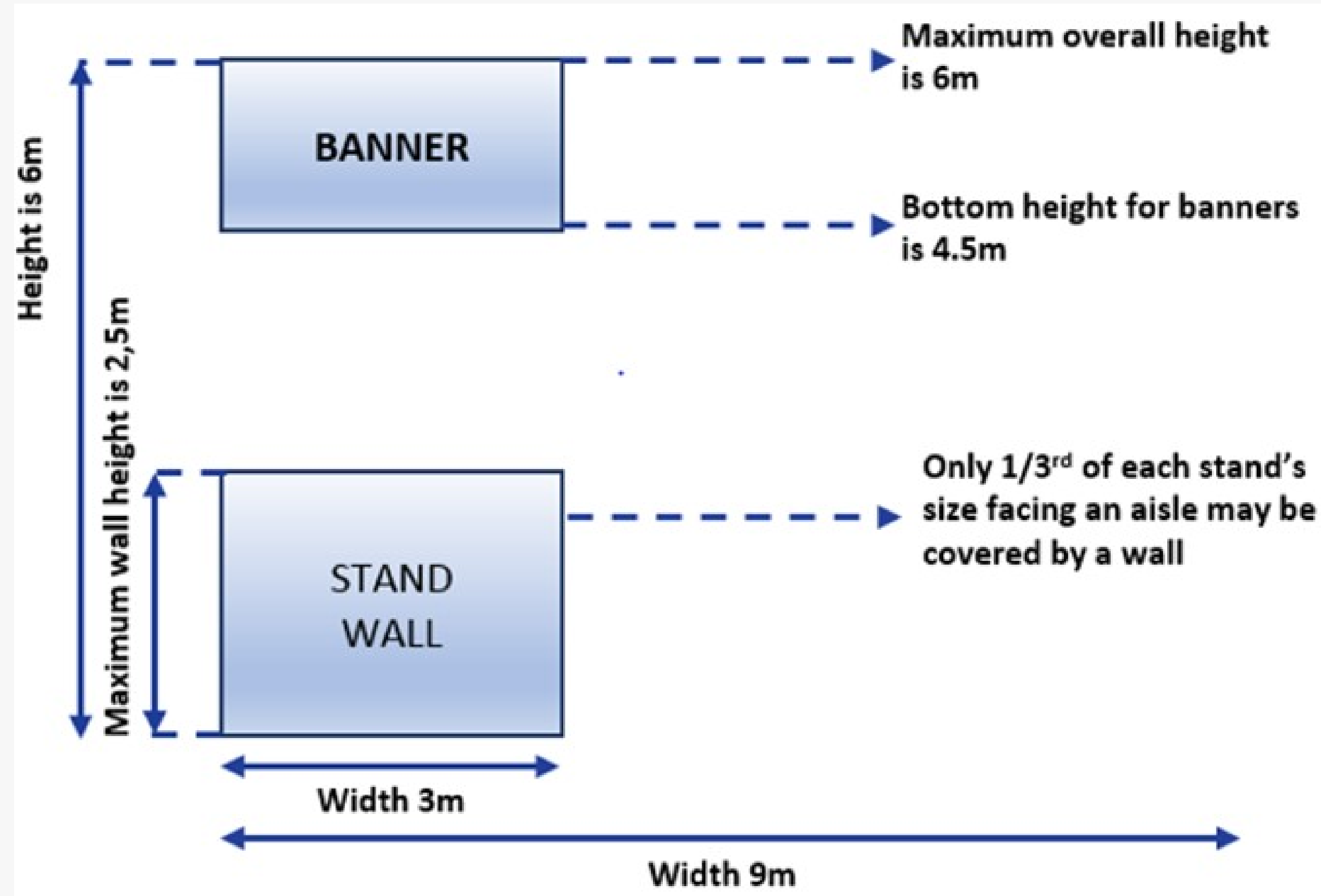
Island booths



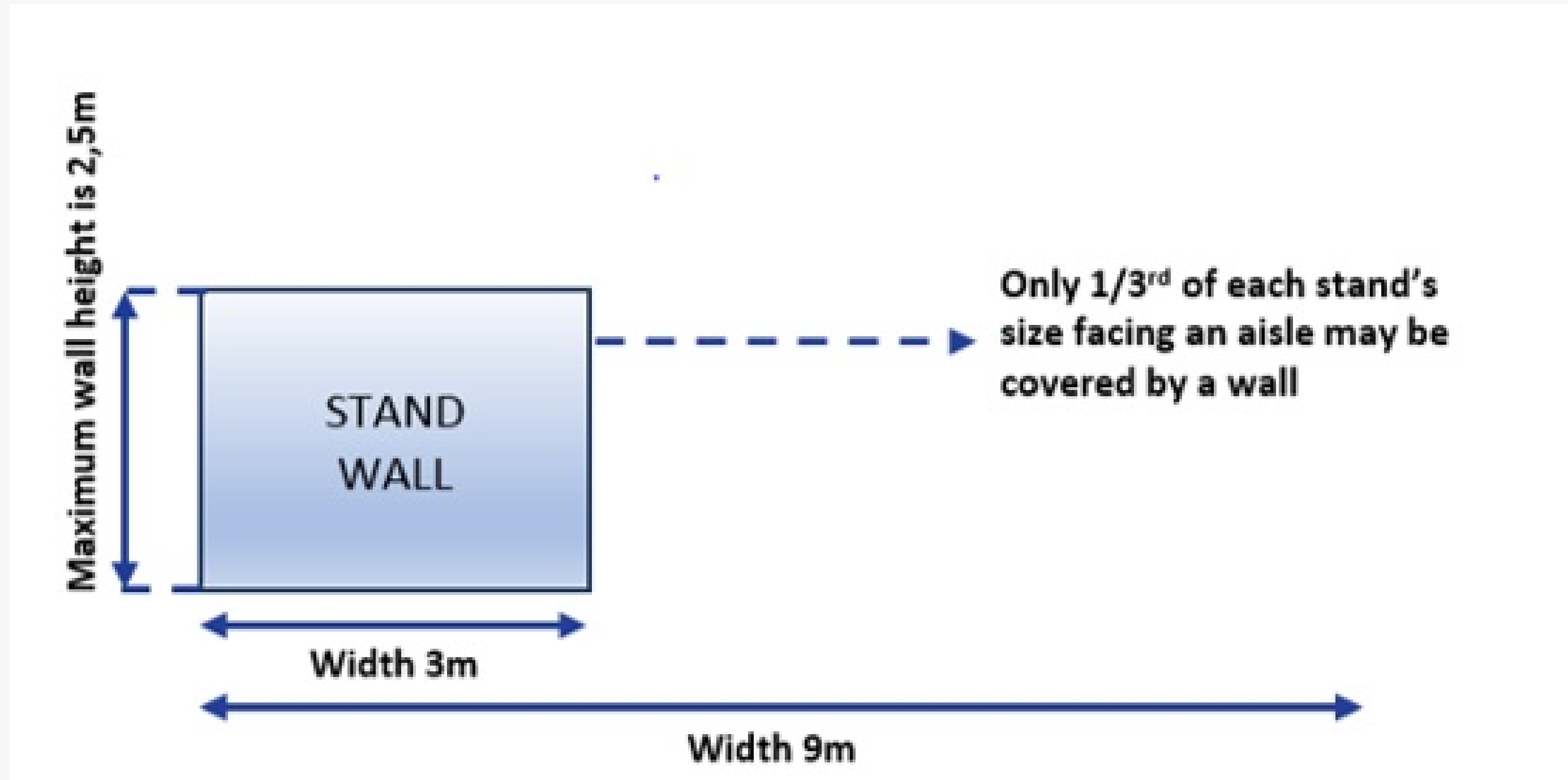


Building Restrictions Green spaces

Inline, Corner and Peninsula booths



● ● ● ● ● **Building Restrictions Orange spaces**
Island, Inline, Corner and Peninsula booths
(no hanging banners possible)





Exhibit



Exhibit build-up

Wednesday, 25 June 2025	Early build-up – payable on demand (send request to exhibit@eshre.eu)
Thursday, 26 June 2025	from 07:00 to 21:00
Friday, 27 June 2025	from 07:00 to 21:00
Saturday, 28 June 2025	from 07:00 to 21:00
Sunday, 29 June 2025	from 07:00 to 17:00 (Welcome reception as of 20:00)

Saturday, 28 June:

- All booths need to be finished!
- Aisles need to be cleared and all empties need to be moved out
- All aisles need to be clean and empty

Sunday, 29 June:

- No heavy material can be brought in anymore
- All aisles need to be clean and empty
- Only booth decoration inside the booth is allowed
- No “dirty” works are allowed

**Times are subject to change*



Exhibit



Exhibit opening dates / hours for visitors exhibit

Sunday, 29 June	from 20:00 to 22:00 (Welcome Reception in exhibit hall for all delegates)
Monday, 30 June	from 08.30 to 17:00
Tuesday, 1 July	from 08.30 to 17:00
Wednesday, 2 July	from 08.30 to 14:00

From Monday, 30 June to Wednesday, 2 July stand holders will have access to the exhibit hall as of 07:30am.



Exhibit

Welcome reception, lunch and coffee breaks

Welcome reception in the exhibit hall on:

Sunday, 29 June, at 20:00 (official start of the congress and opening of the exhibit)

Lunch and coffee breaks in the exhibit hall:



Monday, 30 June

- Coffee break: 09:30-10:00
- Lunch break: 13:00-14:00
- Coffee break: 16:30-17:00

Tuesday, 1 July:

- Coffee break: 09:30-10:00
- Lunch break: 13:00-14:00
- Coffee break: 16:30-17:00

Wednesday, 2 July:

- Coffee break: 09:30-10:00
- Lunch break: 13:00-14:00



Exhibit

Exhibit dismantling (times are subject to change)

Wednesday, 2 July

from 15:00 to 21:00

Thursday, 3 July

from 08:00 until 20:00



Please note the following:

- On Wednesday the exhibit will be closed to visitors as of 14:00 (end of the last lunch break)
- Dismantling can only start once the exhibit hall has been cleared of all visitors at 15:00



Meeting rooms



Very limited number of rooms will be available for business meetings at the Paris Expo Porte de Versailles.

Please send your request to exhibit@eshre.eu



Important changes



- The build-up and dismantling times are different compared to previous years
- The overall height of the orange booth spaces is 4m and 6m for the green spaces
- Rigging points can only hold 80 kg per point, instead of the “normal” 150 kg
- There are weight limitations for the exhibition floor: the maximum floor load is 600 kg/m² (see page 42 in the technical regulations)
- Wearing safety shoes and vests are mandatory, though helmets are preferred but not required. It's still unclear if equipment can be rented or purchased nearby
- It's also uncertain whether stand builders will need to be registered before the start of the build-up days
- Shell scheme booths:
 - They will not be cleaned daily
 - Daytime power will be limited to 1 kW (instead of 3kW)



Your contacts at ESHRE:

Exhibit team e-mail address: exhibit@eshre.eu



Veerle De Rijbel – Exhibit and
Sponsorship Manager
Veerled@eshre.eu - +32 474 510 831



Lieve Buggenhout – Exhibit and
Sponsorship Manager
Lieve@eshre.eu - +32 476 450 867

